



MEMORY SAVER MANUAL

- Memory Saver Utility

sewoo

3" THERMAL POS PRINTER

MODEL : SLK-T SERIES

Rev. 03 / 2024

Aroot Co., Ltd.

The manual and product are protected by copyright.




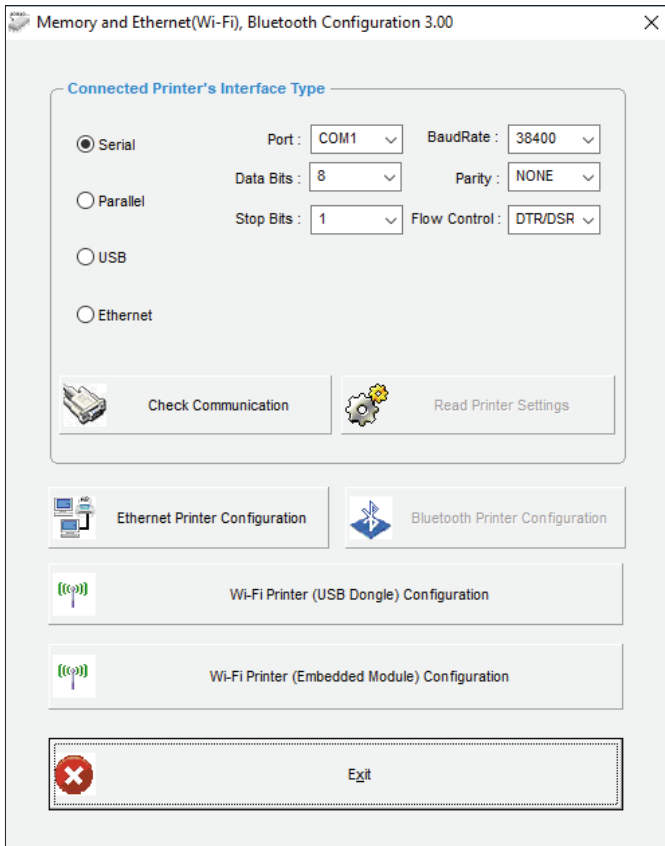
Table of Contents

1. Instruction	3
2. Printer Option Setting	4
3. Code Page Setting	8
4. TCP/IP, Ethernet Setting	10
5. Wi-Fi Setting	12
6. Bluetooth Setting	17

You can change the configuration settings of your printer by using Utility.

– **To configure the printer with Utility.**

- 1 Make sure that you have a PC running Windows XP or later.
- 2 Download utility from the Sewoo website at www.miniprinter.com
- 3 Connect your printer to your PC using USB cable.(Recommended)
- 4 Run the utility.



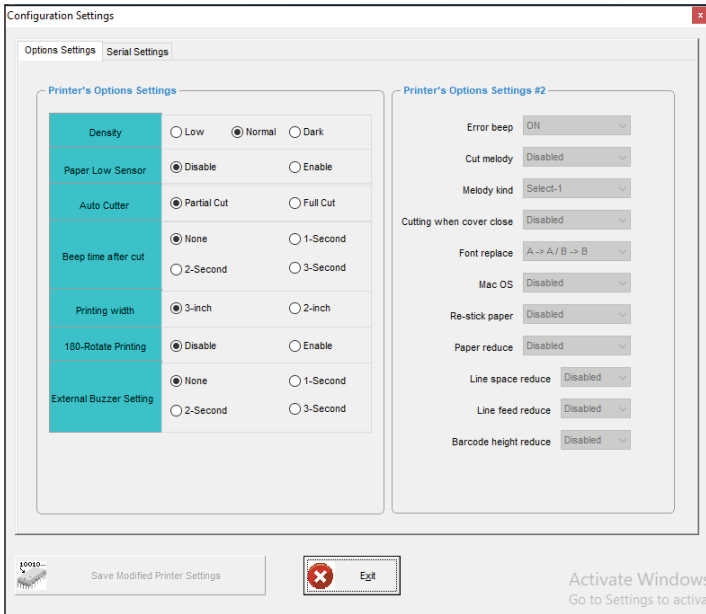
- 5 Select the connection in the **Connected Printer's Interface Type**.
- 6 Click the **Check Communication**.
- 7 Click the button for the settings you want to configure.

– To configure Printer’s Options with Utility

- 1 Click Read Printer Settings.



- 2 Update or check your settings.
- 3 Click Save Modified Printer Settings to finish.



Use the following table to Printer’s Options setting

Name	Description
Density	Set the printing darkness of the printer from Low to Dark.
Paper Low Sensor	Set the mode of the Paper Low Sensor to Disable or Enable.
Auto Cutter	Set the mode of the Auto Cutter to Partial Cut or Full Cut.
Beep time after cut	Set the beep time after cut to none, 1, 2 or 3 Seconds.
Printing width	Set the type of Printing width to 3 Inch or 2 Inch.
180-Rotate Printing	When printing, set whether to rotate 180 degrees. (this option may not be visible depending on the model).
External Buzzer Setting	Set the external melody time. (depending on the model, this option may not be visible).

- **Error Beep**

If the cover is open or there is no paper, the error beep function is activated.
This option allows you to enable / disable the error beep.

– BEEP ON / BEEP OFF

- **Cut melody & Melody kind**

To DK Port (Cash), Melody box or external buzzer can be connected.

You can activate it from the Melody Setting menu, and the melody will operate after the cutting operation.

– Melody Box : Melody is fixed and volume can be adjusted.

– External Buzzer : 3 types of melody are output according to the Melody Type setting and volume control is not included.

- **Cutting when cover close**

If the cover is opened and then closed, decide if you want to cut the paper after the dummy feed.

– Disabled / Enabled

- **Font replace**

FONT SETTING menu can be change the Font mapping(FONT A / FONT B).

If you did not want other side font, you can disable that.

– FONT A : 12x24

– FONT B : 9x17

FONT SETTING

1 FONT A -> A / FONT B -> B

2 FONT A -> B / FONT B -> B

3 FONT A -> A / FONT B -> A

4 FONT A -> B / FONT B -> A

- **Mac os**

It is a function for interlocking with MAC OS. When activated, it is registered as Generic POS Printer in Device Manager.

– Disabled / Enabled

- **Re-stick paper**

It is a function for use the label paper.

When using this function, the printer performs dummy feeding every minute.

(This feature is only supported on certain models)

– Disabled / Enabled

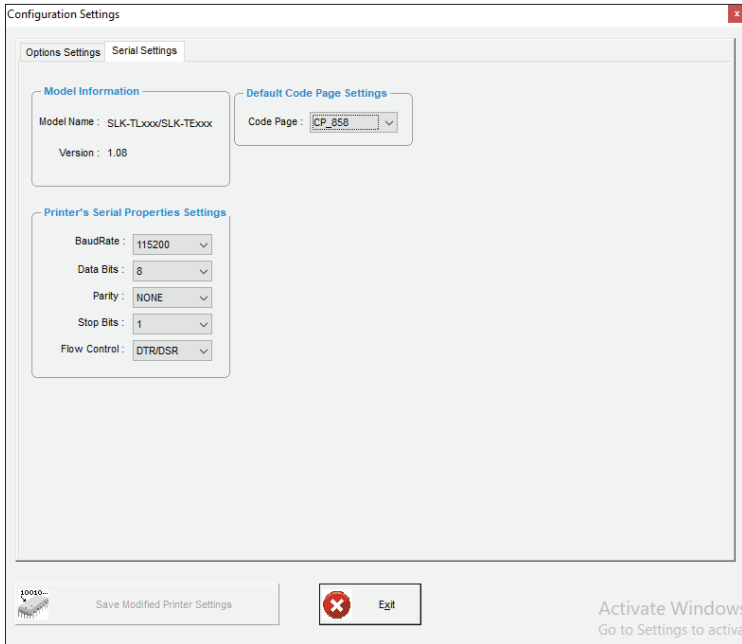
- **Paper Reduce**

Reduce menu (Line space, Line feed, barcode[1D] height) was developed for paper saving.

- Line space : Line space means the amount of feed when you intentionally generate newlines.
- Line feed : Line feed means the amount of feed when there is an automatic line break.
- Barcode Height : Barcode Height means the height of the barcode when creating a one-dimensional barcode.

EACH OPTION

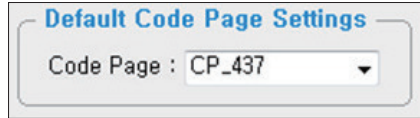
- 1 NORMAL
- 2 REDUCE 50%
- 3 REDUCE 75%
- 4 REDUCE 90%



Name	Description
Code Page	Set the code type of printer to use.
BaudRate	Set the Baudrate of the Printer's serial port to print.
Data Bits	Set the Data Bits of the Printer's serial port to print.
Parity	Set the Parity of the Printer's serial port to print.
Stop Bits	Set the Stop Bits of the Printer's serial port to print.
Flow Control	Set the Flow Control of the Printer's serial port to print.

– To configure Printer's Options with Utility

- 1 Click Serial Settings tab.
- 2 Update or check the Code Page.



- 3 Click Save Modified Printer Settings to finish.

Use the following table to Code Page Settings.

Code Page	Description
CP_437	MS-DOS United States, Australia, New Zealand, South Africa
CP_737	MS-DOS Greek
CP_775	Baltic
CP_850	MS-DOS Latin-1
CP_852	MS-DOS Latin-2
CP_857	MS-DOS Turkish / Latin-5
CP_858	MS-DOS Multilingual / Latin-1 with euro symbol
CP_860	MS-DOS Portuguese
CP_862	MS-DOS Hebrew
CP_863	MS-DOS Canadian French
CP_864	MS-DOS Arabic
CP_865	MS-DOS Nordic / Danish / Norwegian
CP_866	MS-DOS Russian / Cyrillic
CP_874	Thai
CP_1250	Windows Central Europe
CP_1251	Windows Cyrillic
CP_1252	Windows West European Latin 1
CP_1253	Windows Greek
CP_1254	Windows Turkish
CP_1256	Windows Arabic
CP_1257	Windows Baltic
CP_1258	Windows Vietnamese

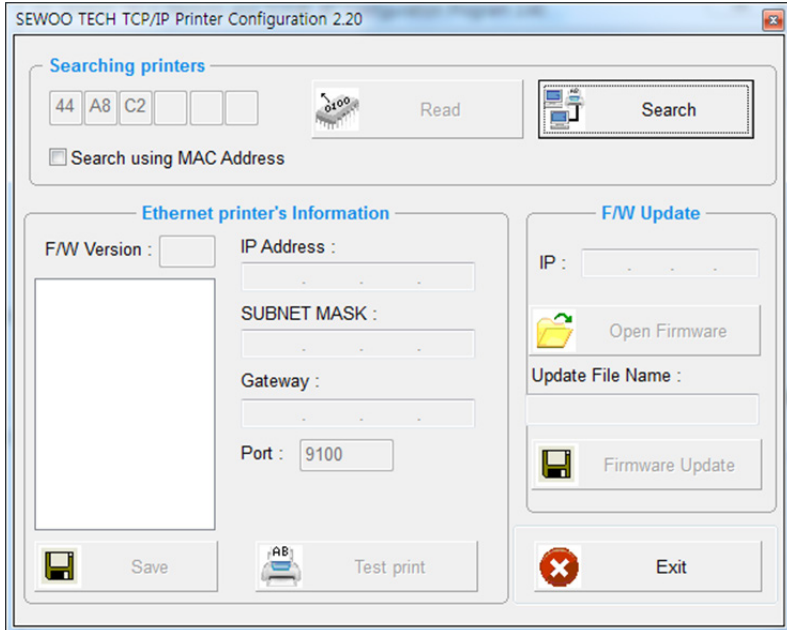
3. Code Page Setting

CP_KATAKANA	Katakana
ISO_8859_1	Latin Alphabet No. 1
ISO_8859_2	Latin Alphabet No. 2
ISO_8859_7	Greek
ISO_8859_9	Latin Alphabet No. 5(Turkish)
MAZOVIA	Polish
TIS11	THAI
TIS13	THAI
TIS14	THAI
TIS16	THAI
TIS17	THAI
TIS18	THAI
TIS42	THAI

For more information, Please contact your supplier.

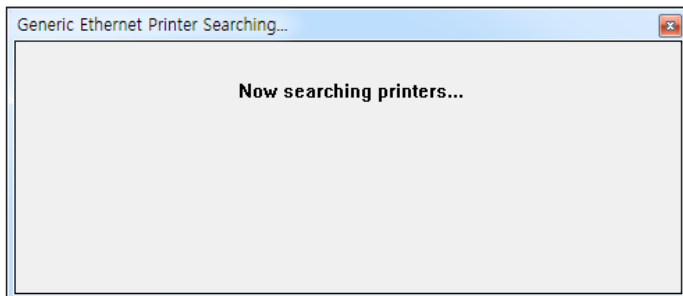
– To configure TCP/IP setting with Utility.

1 Click TCP/IP Printer Configuration.



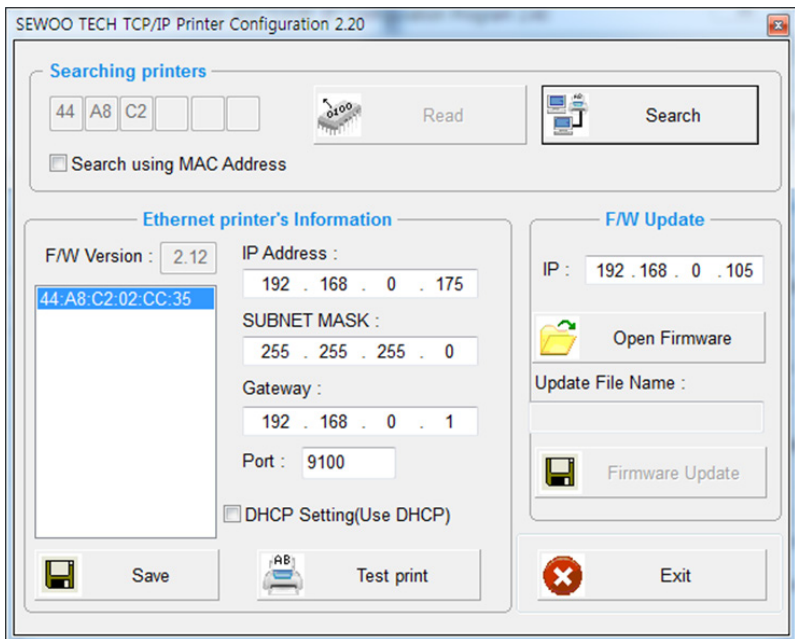
2 Click **Search** to find the printer.

(To Search using MAC Address, you need to check the Search using MAC Address)



3 Update or check your settings.

(To use DHCP Setting, you need to check the DHCP Setting)



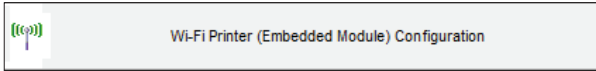
4 Click Test print to test the printer is set correctly.

5 Click Save to finish.

– To configure Wireless LAN settings with Utility.

1. Embedded Module

01 Click Wi-Fi Printer Configuration.

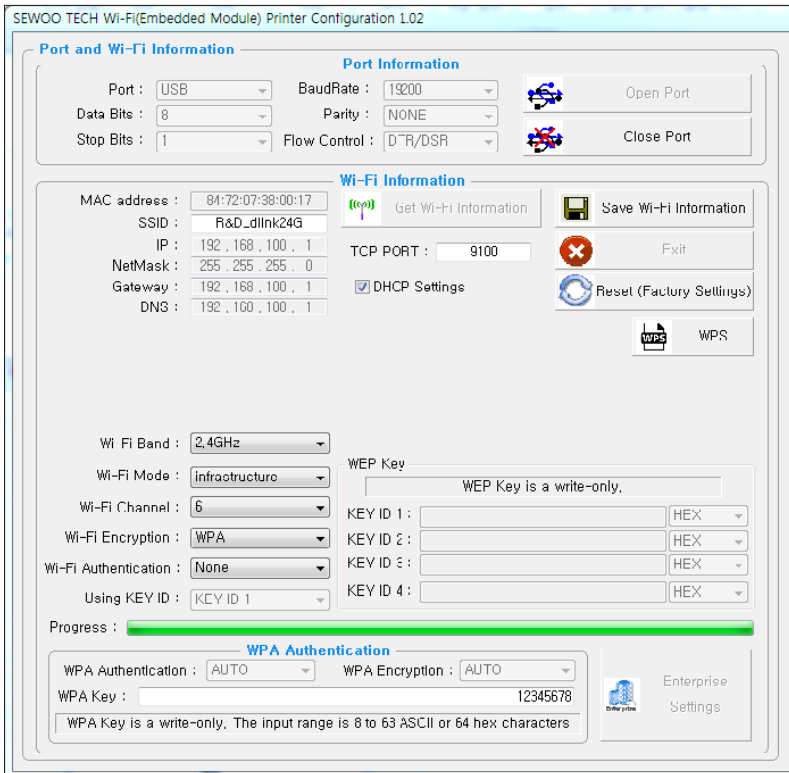


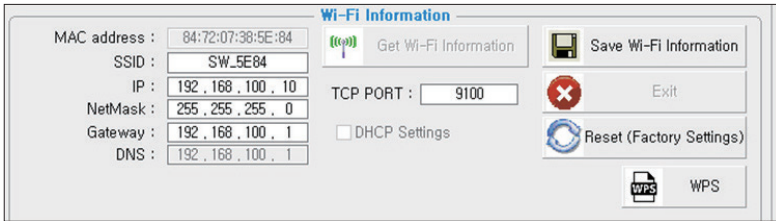
02 Click Open Port.

03 Click Get Wi-Fi Information.

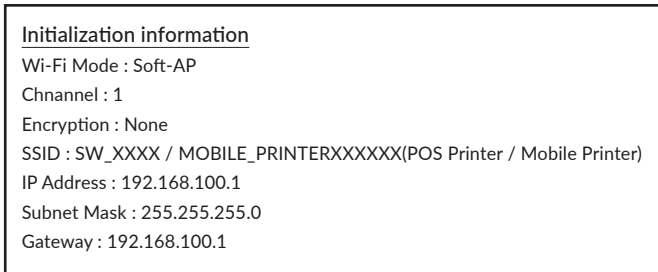
04 Update or check your settings.

05 Click Save Wi-Fi Information to finish.





- Reset(Factory Settings) : Wi-Fi setting will be factory reset.



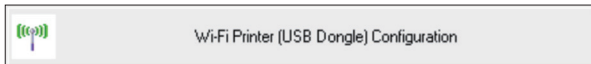
- WPS : Ability to automatically connect to AP even if user does not enter setting information.
(AP must support WPS function.)

<How to use>

Press the WPS button in the Wi-Fi setting utility and press the AP WPS button to connect.

2. USB Dongle

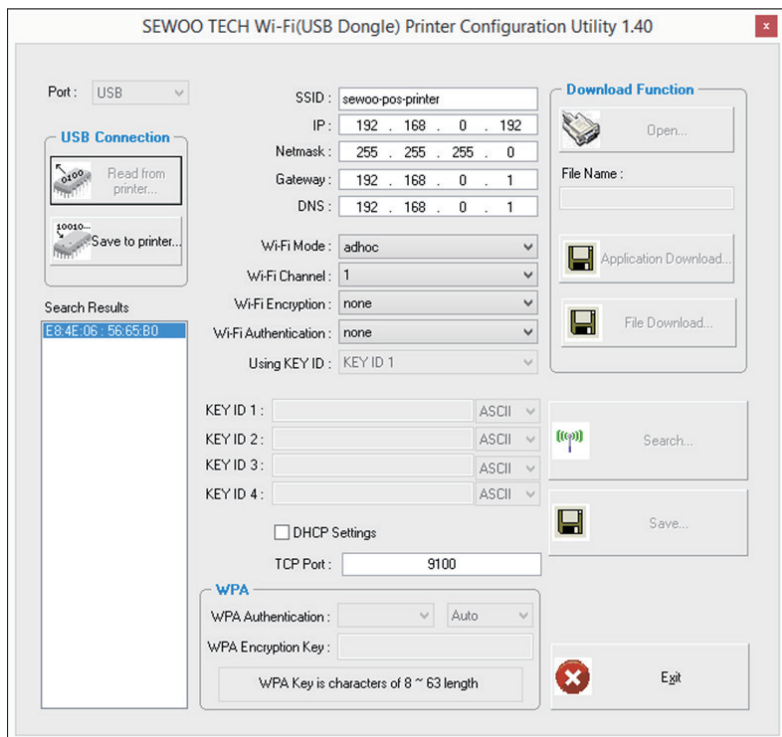
01 Click Wi-Fi Printer (USB Dongle) Configuration.



02 Change the port to USB and click "Read from printer...".

03 Update or check your settings

04 Click "Save to printer..." Wi-Fi Information to finish.



Use the following table to Wireless LAN setting.

Name	Description
SSID	The Network name to connect.
Wi-Fi Mode	Set the mode of the device to Ad-hoc, SoftAP, Infrastructure.
Wi-Fi Channel	Set the channel to use. 2.4GHz : 1 ~ 13 5GHz : 36 ~ 64, 100 ~ 165
Wi-Fi Encryption	Set the type of Encryption to none, WEP-64, WEP-128 or WPA/ WPA2, Enterprise(EAP-TLS, EAP-TTLS, PEAP-MSCHAPv2)
Wi-Fi Authentication	Set the type of Authentication to open system, shared key or both.
Using KEY ID	Set the number of KEY to use from No. 1 to No. 4.
KEY ID 1 ~4	Enter value for up to 4 KEYS to ASCII or HEX
DHCP Settings	IP address and DNS options are obtained using DHCP.
TCP Port	Set the port to use.
WPA Authentication	Set the type of Authentication to WPA-PSK, WPA2-PSK, Auto / TKIP, AES, Auto

– To Set Wi-Fi printer correctly, you need to check the AP's or Router's setting in advance. Ex) D-Link Router (Model: DIR-820L)

WIRELESS

Use this section to configure the wireless settings for your D-Link Router. Please note that changes made on this section may also need to be duplicated on your Wireless Client.

Save Settings Don't Save Settings

WIRELESS NETWORK SETTINGS

Wireless Band : 2.4GHz Band

Enable Wireless: Always Add New

Wireless Network Name: R&D_dlink24G (Also called the SSID)

802.11 Mode: Mixed 802.11n, 802.11g and 802.11b

Enable Auto Channel Scan:

Wireless Channel: 2.437 GHz - CH 6

Transmission Rate: Best (automatic)

Channel Width: Auto 20/40 MHz

Visibility Status: Visible Invisible

WIRELESS SECURITY MODE

To protect your privacy you can configure wireless security features. This device supports three wireless security modes, including WEP, WPA-Personal, and WPA-Enterprise. WEP is the original wireless encryption standard. WPA provides a higher level of security. WPA-Personal does not require an authentication server. The WPA-Enterprise option requires an external RADIUS server.

Security Mode: WPA-Personal

WPA

Use WPA or WPA2 mode to achieve a balance of strong security and best compatibility. This mode uses WPA for legacy clients while maintaining higher security with stations that are WPA2 capable. Also the strongest cipher that the client supports will be used. For best security, use **WPA2 Only** mode. This mode uses AES(CCMP) cipher and legacy stations are not allowed access with WPA security. For maximum compatibility, use **WPA Only**. This mode uses TKIP cipher. Some gaming and legacy devices work only in this mode.

To achieve better wireless performance use **WPA2 Only** security mode (or in other words AES cipher).

WPA Mode: Auto (WPA or WPA2)

Cipher Type: TKIP and AES

Group Key Update Interval: 3600 (seconds)

PRE-SHARED KEY

Enter an 8- to 63-character alphanumeric pass-phrase. For good security it should be of ample length and should not be a commonly known phrase.

Pre-Shared Key: *****

General Settings (Left Panel):

SSID : R&D_dlink24G

IP : 192 . 168 . 0 . 192

Netmask : 255 . 255 . 255 . 0

Gateway : 192 . 168 . 0 . 1

DNS : 192 . 168 . 0 . 1

Wi-Fi Mode : infrastructure

Wi-Fi Channel : 6

Wi-Fi Encryption : WPA

Wi-Fi Authentication : both

Using KEY ID : KEY ID 1

KEY ID 1 : ASCII

KEY ID 2 : ASCII

KEY ID 3 : ASCII

KEY ID 4 : ASCII

DHCP Settings

TCP Port : 9100

WPA

WPA Authentication : WPA2-PSK AES

WPA Encryption Key : 12345678

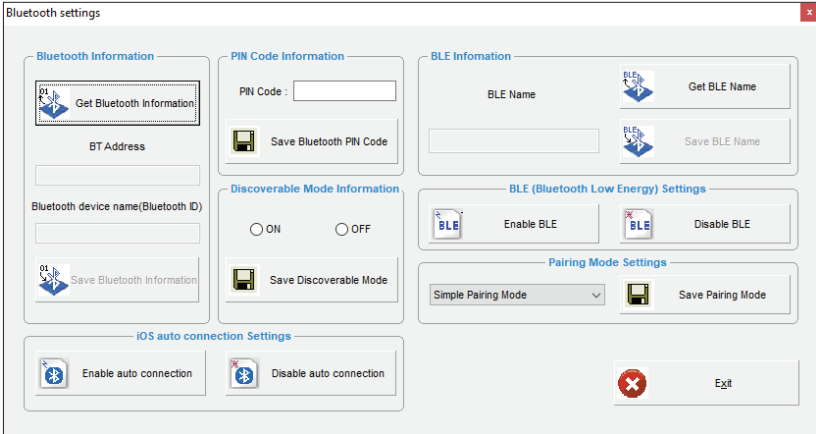
WPA Key is characters of 8 ~63 length

- To configure Bluetooth setting with Utility.

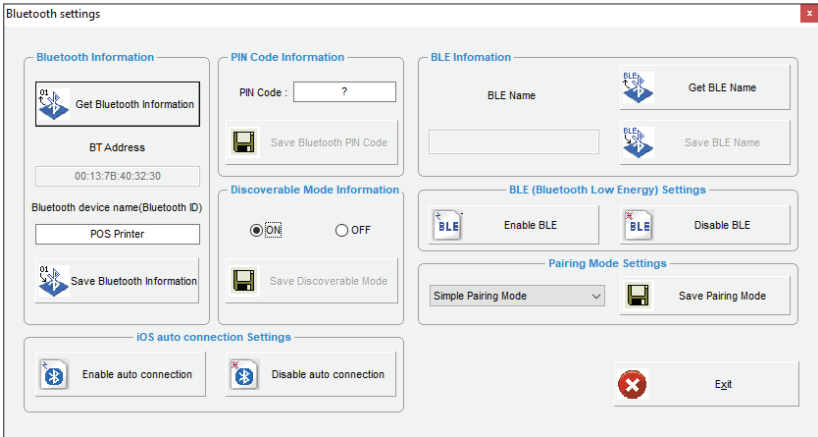
1 Click Communication After Bluetooth Printer Configuration.



2 Click Get Bluetooth Information.



3 Update or check your settings.



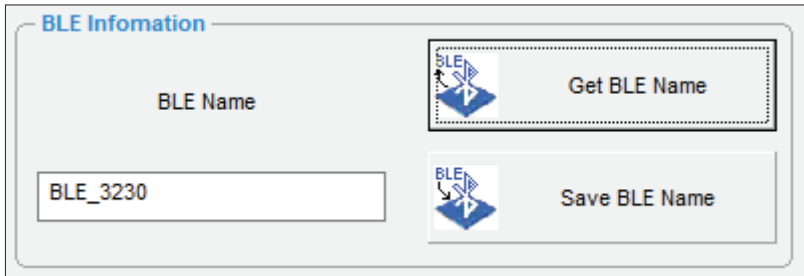
4 Click Save Bluetooth Information to finish.

Use the following table to Bluetooth setting.

Name	Description
BT Address	The MAC address for Bluetooth Module.
Bluetooth device name (Bluetooth ID)	This is the name that appears in the list when searching for Bluetooth.
PIN Code	This value is required when pairing with a printer set to Pincode mode. (Default : 0000 or 1234)
Discoverable Mode	Set whether the printer will appear or not in a Bluetooth inquiry on another device, typically, a master device.
iOS auto connection Settings	This feature automatically connects to previously connected iOS devices.
Pairing Mode Settings	This function sets the pairing mode. – Numeric Comparison Mode – Simple Pairing mode (Default) – Pincode mode
BLE Name	This is the name that appears in the list when searching for BLE
BLE Settings	This is a function to select whether or not to set up BLE.

This is how to set the BLE (Bluetooth Low Energy) name.

- 1 Click the Get BLE Name button.



The screenshot shows a dialog box titled "BLE Information". It contains a label "BLE Name" above a text input field. The input field contains the text "BLE_3230". To the right of the input field, there are two buttons. The top button is labeled "Get BLE Name" and has a Bluetooth icon to its left. This button is enclosed in a dashed rectangular border, indicating it is the focus of the instruction. The bottom button is labeled "Save BLE Name" and also has a Bluetooth icon to its left.

- 2 Enter the BLE name and click the Save BLE Name button to save it.

sewoo

Aroot Co., Ltd.

28-6, Gajangsaneopdong-ro, Osan-si,
Gyeonggi-do, 18103, Republic of Korea

TEL: +82-31-8077-5000 / FAX: +82-31-624-5310

www.miniprinter.com