

# OPOS Driver Manual

- POS -

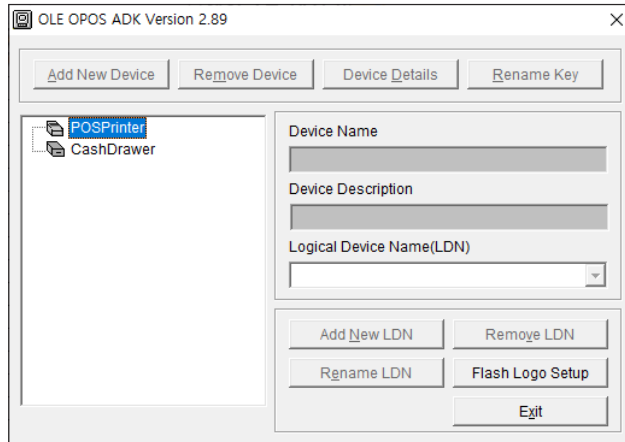


# INDEX

1. Setup POS Printer	2
2. Setup CashDrawer	7
3. NV upload	10

# 1. Setup POS Printer

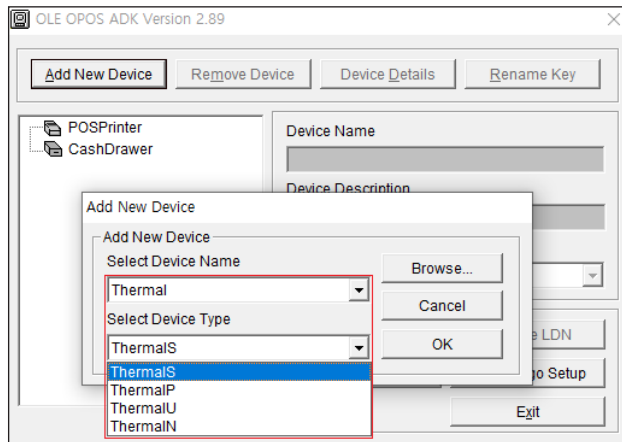
- 1 Install OPOS Driver.
- 2 After the installation is finished, execute the program "SetupPOS.exe".



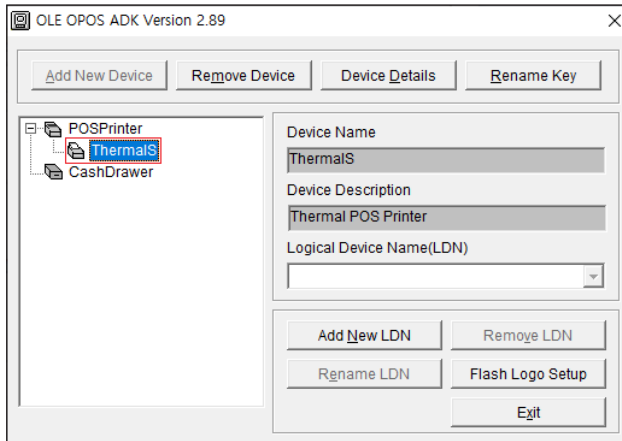
- 3 Select "POSPrinter" and Click "Add New Device" button.  
Choose Thermal in "Select Device Name", then Click the combo box of Select Device Type. You will see the below image.  
In the name of Select Device Type, it will express about the interface.
  - EX) ThermalS ▶ Serial Interface.  
ThermalP ▶ Parallel Interface.  
ThermalN ▶ Ethernet Interface.  
ThermalU ▶ USB.

# 1. Setup POS Printer

Select "Select Device Type" which you want to connect. Then Click "OK".

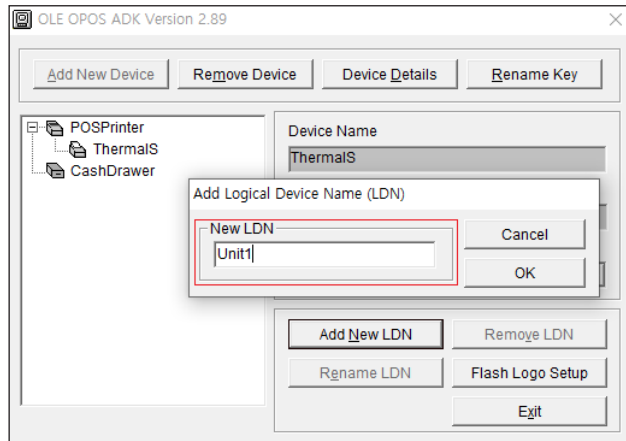


- 4 If you select the Serial interface, you will see the image as below.  
Select "ThermalS", then Click "Add New LDN" button.

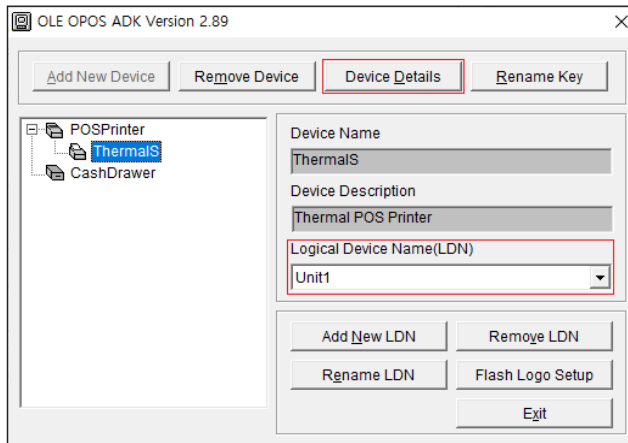


# 1. Setup POS Printer

- 5 In the below image, input the Logical Device Name, then click “OK”.  
Logical Device Name is used when using Open() Method in application.

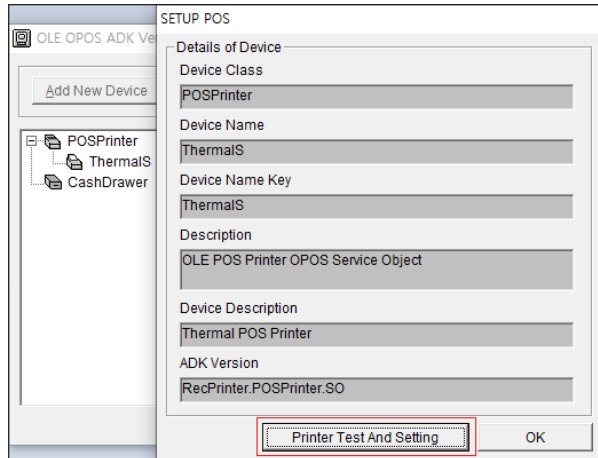


- 6 Click the “Device Details” button.

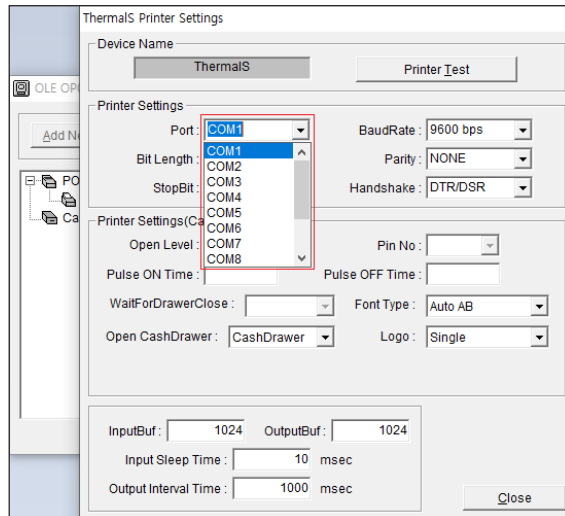


# 1. Setup POS Printer

7 Click "Printer Test And Setting" button.

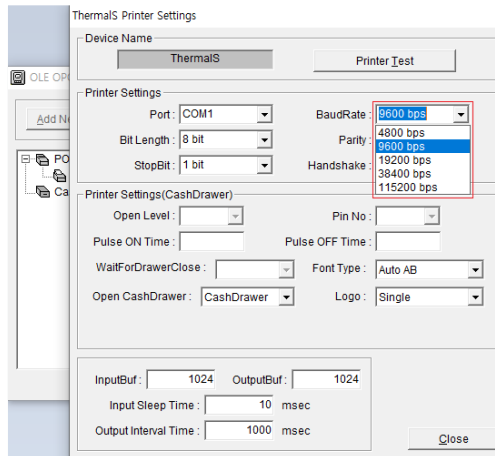


8 Choose the port which you want in Serial Interface.



# 1. Setup POS Printer

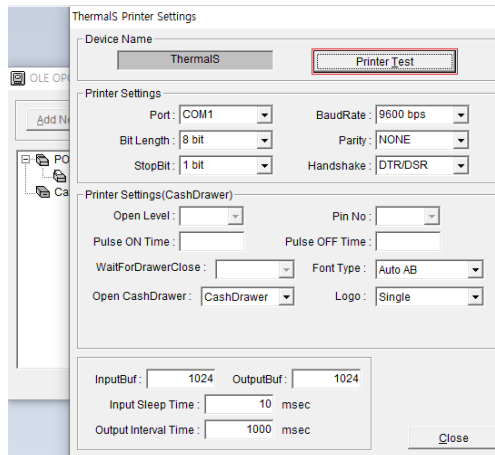
- 9 Choose the baudrate which you want in Serial Interface.



- 10 Click the "Printer Test" button to print out correctly.

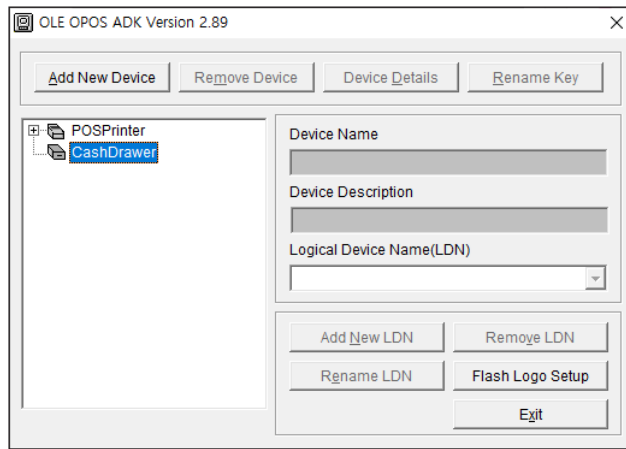
If printing is failed, check the installed windows printer driver is set to use the same port.

In case of USB(or Ethernet), even if the same port is used, there is no conflict between them.



## 2. Setup CashDrawer

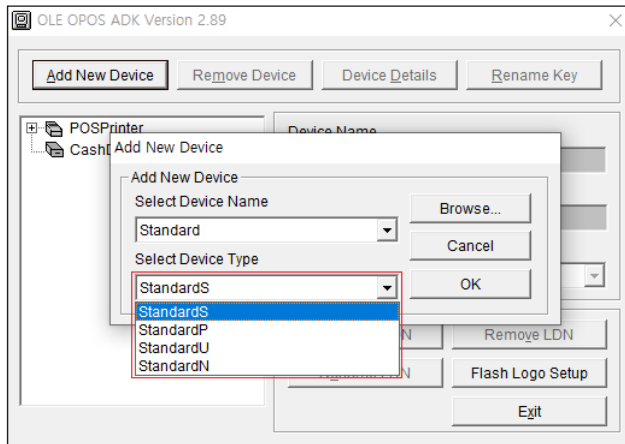
- 1 Select “CashDrawer”, then click “Add New device” button.



- 2 Click Combo Box of the “Select Device Type” to select device type.  
(It should be the same as the POSPrinter interface.)
  - EX) ThermalS ▶ Serial Interface.
    - ThermalP ▶ Parallel Interface.
    - ThermalN ▶ Ethernet Interface.
    - ThermalU ▶ USB

## 2. Setup CashDrawer

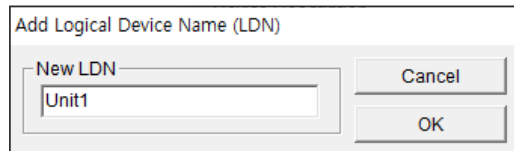
Select "Select Device Type" which you want to connect. Then click "OK".



**3** Select "CashDrawer", then Click "Add New LDN" button.

**4** In the below image, input Logical Device Name, then click "OK".

Logical Device Name is used when using Open() Method in application.



## 2. Setup CashDrawer

- 5 Click the “Device Details” and “Printer Test And Setting” button.

SETUP POS

Details of Device

Device Class  
CashDrawer

Device Name  
StandardS

Device Name Key  
StandardS

Description  
OLE Cash Drawer OPOS Service Object

Device Description  
Standard Cash Drawer

ADK Version  
Standard.CashDrawer.SO

Printer Test And Setting OK

- 6 Select the same port and baudrate as the printer and click the “printer test” button.

StandardS Printer Settings

Device Name  
StandardS

Printer Test

Printer Settings

Port : COM1 BaudRate : 9600 bps

Bit Length : 8 bit Parity : NONE

StopBit : 1 bit Handshake : DTR/DSR

Printer Settings(CashDrawer)

Open Level : Low Pin No : 2

Pulse ON Time : 100 Pulse OFF Time : 400

WaitForDrawerClose : Yes Font Type :

Open CashDrawer : Logo :

USB Serial Number :

InputBuf : 1024 OutputBuf : 1024 Execute USB utility

Input Sleep Time : 10 msec

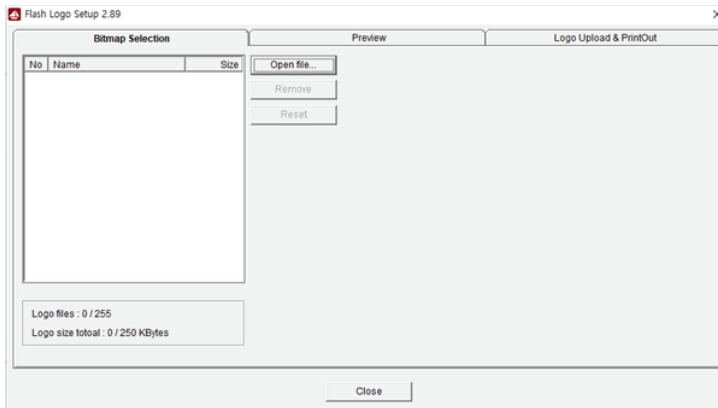
Output Interval Time : 500 msec

Close

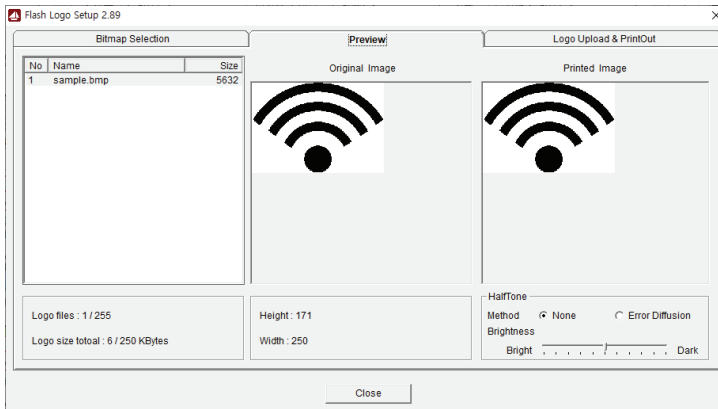
- 7 If CashDrawer does not open, check if it is the same as the POSPrinter setting.

## 3. NV upload

- 1 Run “NVUpload.exe”, then you can see “Flash Logo Setup” program



- 2 Click the “Open file...” button and choose the bmp file.
- 3 You can see loaded image and adjust it in Tab “preview.



## 3. NV upload

4 In tab "Logo Upload & PrintOut", you can upload and print the logo.

